

# 2" LED TRIM MOUNTED REFLECTORS



ELEMENT Specular Reflectors reduce glare while creating a clean, quiet ceiling appearance. Available finishes include Anodized Gold for a decorative accent, or Anodized Black for a truly silent ceiling look. These beautiful trim accessories have been specifically designed to minimize any effect on light performance, color, and output. Specular Reflectors are available for both Adjustable and Fixed downlights, and are compatible with ELEMENT 2" trims and housings.

- Can be easily installed or removed
- Mounts to existing trim
- Compatible with Fixed and Adjustable Housings
- Finish Options: Anodized Gold (G) or Anodized Black (B)

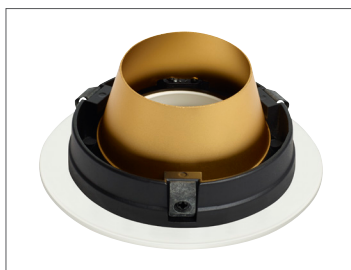


shown in black (Reflector only)

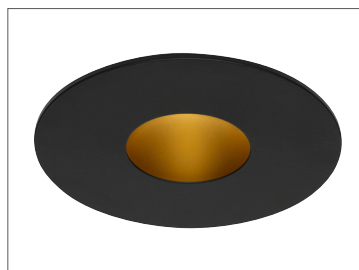
## SPECIFICATIONS

COMPATIBLE TRIMS	TRIM DESCRIPTION	NON-SLOTTED (FOR FIXED HOUSINGS)			SLOTTED (FOR ADJUSTABLE HOUSINGS)		
		E2TREFNS1 (B, G)	E2TREFNS2 (B, G)	E2TREFNS3 (B, G)	E2TREFS2 (B, G)	E2TREFS3 (B, G)	E2TREFS4 (B, G)
E2RFB	2", ROUND, BEVEL, FLANGED			•			•
E2RFF	2", ROUND, FLAT, FLANGED		•			•	
E2SFB	2", SQUARE, BEVEL, FLANGED	•			•		
E2RLB	2", ROUND, BEVEL, FLANGELESS			•			•
E2RLF	2", ROUND, FLAT, FLANGELESS		•			•	
E2SLB	2", SQUARE, BEVEL, FLANGELESS	•			•		

Only compatible with ELEMENT 2" LED series. May require lamp to be placed in High position. Not available for ELEMENT 2" Square Flat trims. Not compatible with lensed trims.



shown in gold (trim mounted)



shown in gold (below ceiling view)



shown in gold (below ceiling view)

## GRIDS

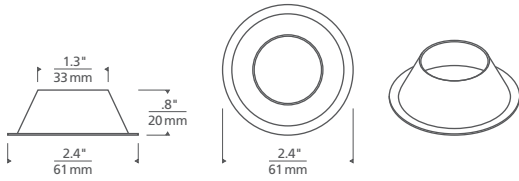
### E2 TRIM MOUNTED REFLECTORS\*

PRODUCT SERIES	STYLE	FINISH
E2TREF	NS1	NON-SLOTTED
	NS2	NON-SLOTTED
	NS3	NON-SLOTTED
	NS4	NON-SLOTTED
	S1	SLOTTED
	S2	SLOTTED
	S3	SLOTTED
	S4	SLOTTED

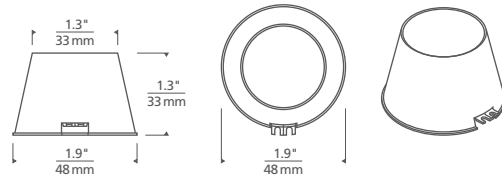
### E2TREF

\*NOT COMPATIBLE WITH LENSED TRIMS.

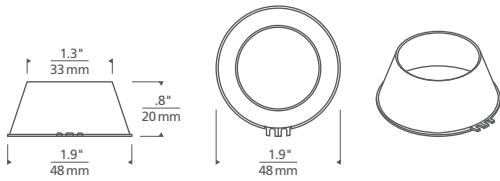
## REFLECTOR NON-SLOTTED



E2TREFNS1(B, G)

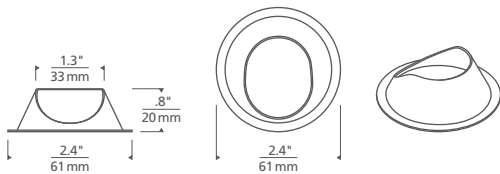


E2TREFNS2(B, G)

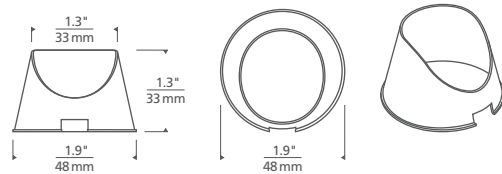


E2TREFNS3(B, G)

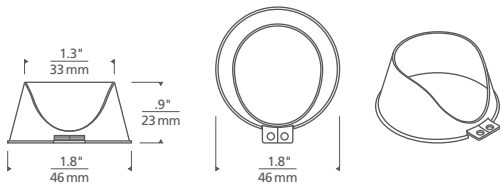
## REFLECTOR SLOTTED



E2TREFS2(B, G)



E2TREFS3(B, G)



E2TREFS4(B, G)

## PROJECT INFO

FIXTURE TYPE & QUANTITY

JOB NAME & INFO

NOTES

---



---



---



---



---



---

**ELEMENT**  
by Tech Lighting®

GENERATION BRANDS  
7400 Linder Avenue, Skokie, Illinois 60077  
T 847.410.4400 F 847.410.4500



© 2018 Tech Lighting, L.L.C. All rights reserved. The "Tech Lighting" graphic is a registered trademark of Tech Lighting, L.L.C. Tech Lighting reserves the right to change specifications for product improvements without notification.