

Trim Adapter for Wood/Stone Ceilings

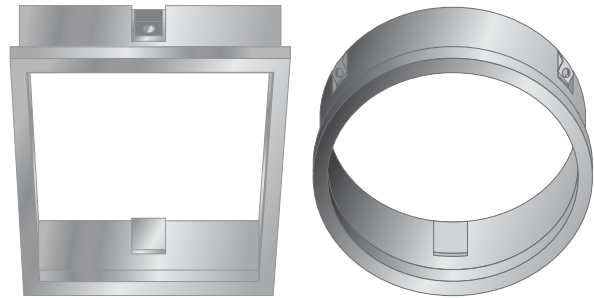


ELEMENT
by Tech Lighting®

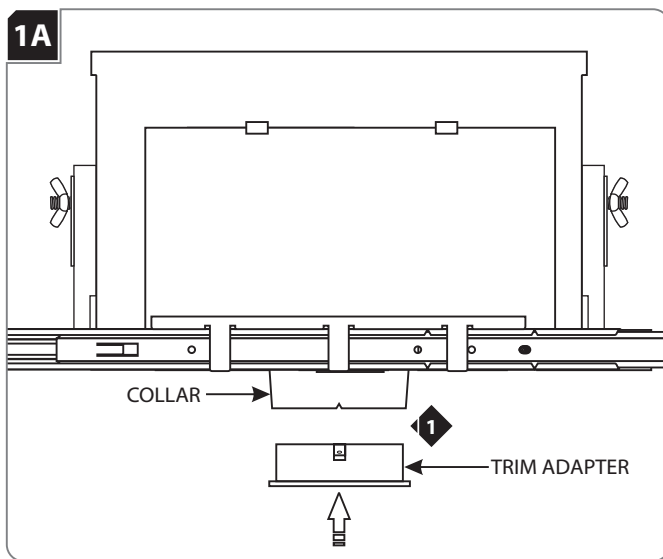
GENERAL PRODUCT INFORMATION:



Installation height of the fixture will vary according to ceiling materials used. The trim must be flush with the ceiling surface.

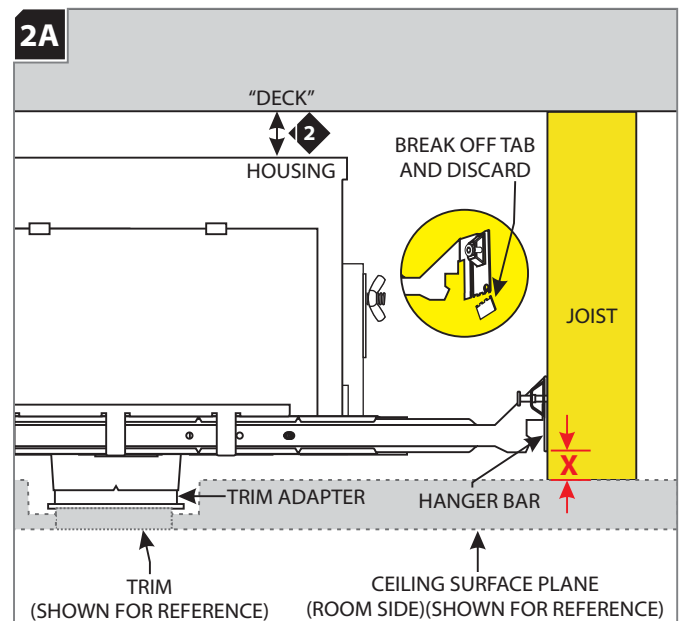


Install the Trim Adapter



1 Install the trim adapter into the housing collar (trim holder) **PRIOR** to ceiling installation.

Housing Installation for Ceiling Thicknesses Between 3/8" and 1-1/2"



For a ceiling thickness between 3/8" and 1-1/2" use the provided dimensions or equation to determine the distance (X dimension) between the bottom of the hanger bar and the bottom of the joist.

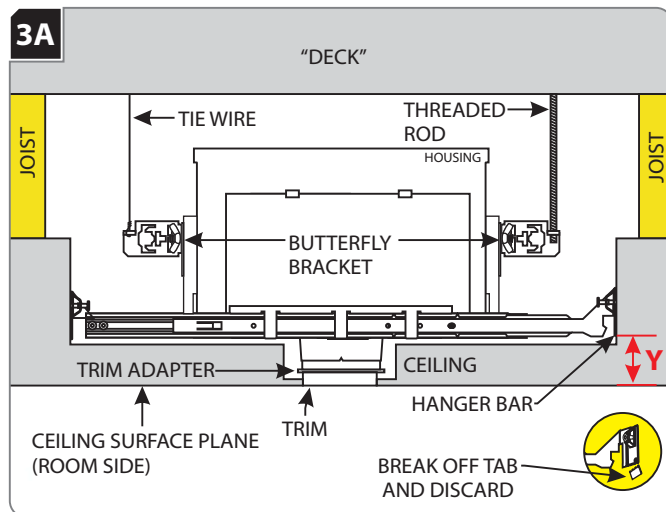
$$(1-5/8") - (\text{ceiling thickness}) = X \text{ dimension } +/- (1/8")$$

CEILING THICKNESS	X - DIMENSION	TOLERANCE*
3/8"	1-1/4"	+/- (1/8")
1/2"	1-1/8"	+/- (1/8")
3/4"	7/8"	+/- (1/8")
1"	5/8"	+/- (1/8")
1-1/2"	1/8"	+(1/8")

* The trim adaptor may be adjusted 1/2" vertically within the collar.

- 1** The installation height of the fixture is based on the ceiling thickness. Calculate the distance from the bottom of the hanger bar, with the tabs removed (see tab illustration), to the bottom of the joist.
- 2** **NOTE:** Ensure that the top of the fixture housing will not interfere with the ceiling "deck" above if installing the fixture at a higher position.
- 3** Follow the installation instruction provided with the fixture to finish the installation. **NOTE:** the installment height detailed in these instructions supersedes the fixture instructions.
- 4** Proceed to Section 4A for milling details and ceiling cut-out dimensions.

Housing Installation for Ceiling Thickness Greater Than 1-1/2"



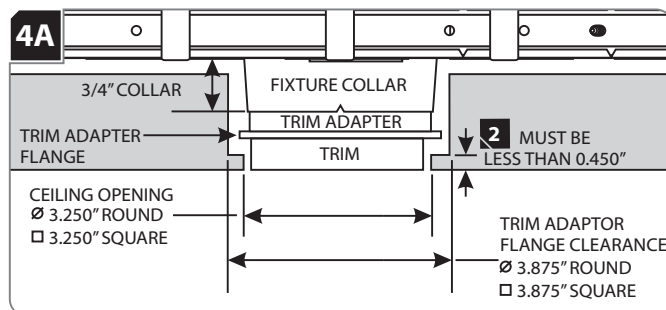
- 1 For a ceiling thickness greater than 1-1/2", the top side of the ceiling may need to be cut out in order to allow clearance for the entire fixture so that it may be installed at the correct height. In this case, it may be preferable to utilize the butterfly brackets (with or without the hanger bars) to mount the fixture either to:
 - the joist
 - the cutout wall of the ceiling
 - or by tie wire/threaded rod

- 2 Using the provided equation, calculate the distance from the bottom of fixture housing/hanger bar with the tabs removed (see tab illustration) to the ceiling surface plane (room side).

$$Y = (1-5/8") +/- (1/8")$$

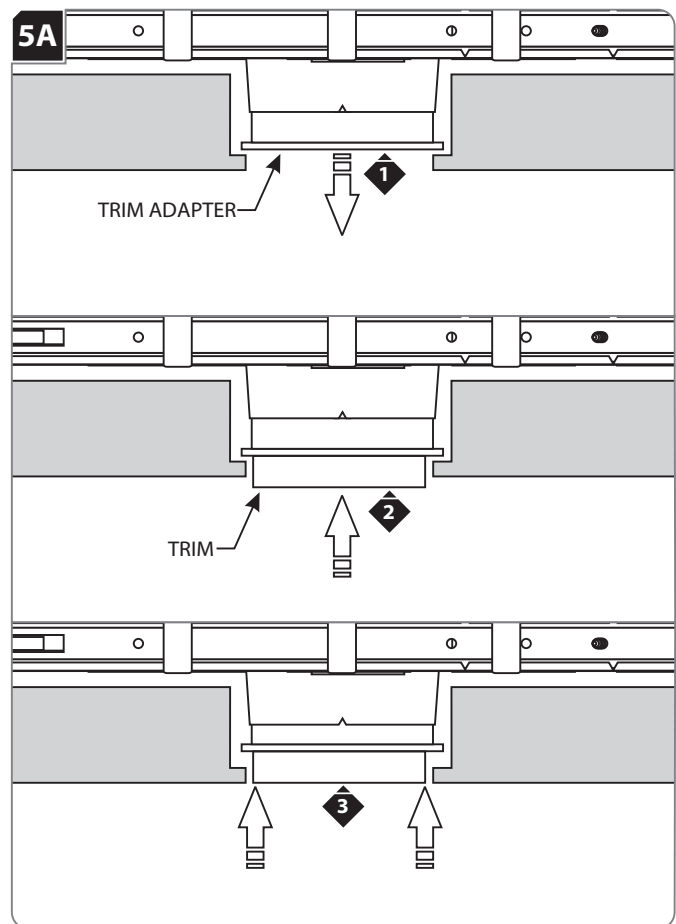
- 3 **NOTE:** Ensure that top of the fixture housing will not interfere with the ceiling "deck" if installing the fixture at a higher position.
- 4 Follow the installation instruction provided with the fixture to finish the installation. **NOTE:** the installment height detailed in these instructions supersedes the fixture instructions.
- 5 Proceed to Section 4A for milling details and ceiling cut-out dimensions.

Ceiling Opening/Aperture Cutout



- 1 Cutout an opening in the ceiling for the trim/aperture with the provided dimensions.
- 2 For a ceiling thicker than 0.450", clearance for the trim adaptor flange must be made.
- 3 Install the ceiling.

Install and Set the Trim



- 1 After ceiling installation, pull the trim adapter down towards the ceiling to prepare it for trim installation. Note: the trim adapter has approximately 1/2" of vertical adjustment.
- 2 Insert the trim into the trim adapter and ceiling opening.
- 3 Gently push both the trim and trim adapter further into the ceiling and fixture collar until the trim is flush to the ceiling. If the trim is pushed too far into the ceiling, remove the trim and repeat this section.

SAVE THESE INSTRUCTIONS!

ELEMENT

by Tech Lighting®

7400 Linder Ave, Skokie, IL 60077

847.410.4400

www.element-lighting.com

© 2015 Tech Lighting, L.L.C. All rights reserved. The "Element" graphic is a registered trademark of Element. Element reserves the right to change specifications for product improvements without notification.

A Generation Brands Company