

Creating a continuous uninterrupted line of beautiful, glare-free LED light, the ELEMENT Merge 1.5 recessed linear system inconspicuously puts light where it is needed without drawing attention to the fixture. The continuous line aesthetic created by the ELEMENT Merge system is enhanced using either a specifically engineered 90° turn connector or wall-to-ceiling connector. Lines of LED light can be designed to seamlessly make 90° same-plane turns or transition from ceiling to wall for enhanced design interest while also allowing the option to add spot heads for accent and task lighting, all without adding more light fixtures to the space.

Key Features:

- Optional illuminated 90° horizontal (same plane) transitions (not available in Lay-in)
- Low profile design for use in 2x4 construction
- Dual sided illumination for even light along the channel
- 3-Step or better color binning
- Internal reflector finished with high-reflectance matte white paint for even light distribution & optimal efficiency

SPECIFICATIONS

DELIVERED LUMENS	900 lms/ft or 600 lms/ft
WATTS	15 watts/ft or 9 watts/ft
EFFICACY	60 l/w or 67 l/w
CRI	80+, 90+
CCT OPTIONS	2700K, 3000K, 3500K or Warm Color Dimming (3000K-2000K)
VOLTAGE	120V or 277V (Concealed 10 gauge, low-voltage bus bar, order 12-volt remote transformer sold separately)
DIMMING	ELV, 0-10, Hi-Lume
CEILING APPEARANCE	Flanged: field paintable, with 4.8" width overlapping ceiling cutout. Flangeless Lay-In: T-Grid optimized for 9/16" or 15/16"
CEILING APERTURE	1.5" beveled
HOUSING	IC Airtight. IC suitable up to R60 spray foam insulation (Consult factory for Chicago Plenum).
POWER SUPPLY**	Constant Current (Each linear channel includes a self-contained ELV, 0-10V, Lutron Hi-Lume 2 Wire PWM (120V only) or Lutron Hi-Lume, Eco System Fade-to-Black Driver, 0-10V 1%, 0-10V 0.1%)
CONSTRUCTION	Housing: 20 gauge sheet metal Extrusion: Aluminum
HARDWARE	Steel
FINISH	White Powder Coat
GENERAL LISTING	ETL
CALIFORNIA TITLE 24	Registered CEC Appliance Database. Can be used to comply with CEC 2016 Title 24 Part 6 (Static White, 90 CRI versions).
LED LIFETIME	L70; 50,000 hours
WARRANTY*	5 years

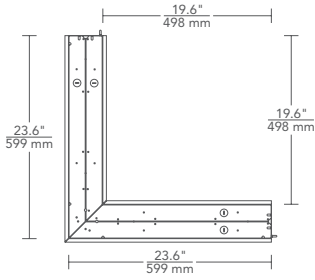
*Visit ELEMENT-lighting.com for specific warranty limitations and details.
**Consult Quotes Department for additional driver options.

Max run length is 80' for the channel; typical max run length is 40' for the low-voltage bus which can be powered from both sides for a total of 80'; system wattage will impact max run length

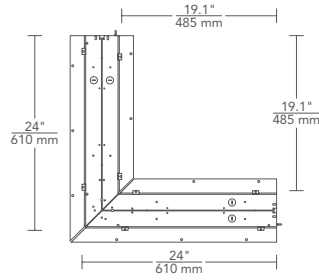


MERGE
shown flanged

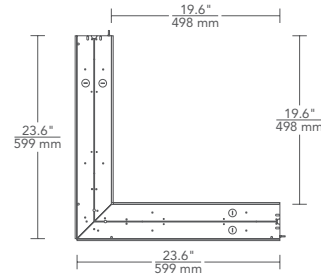
DIMENSIONS



Flanged 90° L connector (top view)



Flangeless 90° L connector (top view)



Lay-In 90° L connector (top view)

GRIDS

LINEAR CHANNELS

SYSTEM	TYPE	CEILING APPEARANCE	CRI/COLOR TEMPERATURE	FINISH	HOUSING	CONTROLS				
RLS1	L "L" CONNECTOR	RF RECESSED FLANGED	H835 80 CRI, 3500K, HIGH DOWN ONLY	W MATTE WHITE	I IC	ELV0 ELV/0-10V DIMMING UNV†				
		RL RECESSED FLANGELESS	H927 90 CRI, 2700K, HIGH DOWN ONLY			ELD0 ELDOLED 0.1% 0-10V LINEAR UNV†				
		LI LAY-IN (T-GRID)	H930 90 CRI, 3000K, HIGH DOWN ONLY			ELD0A ELDOLED 0.1% 0-10V LOGARITHMIC UNV†				
		H935 90 CRI, 3500K, HIGH DOWN ONLY	ELD1 ELDOLED 1% 0-10V LINEAR UNV†							
		H9WD 90 CRI, WARM DIM 3000-2000K, HIGH DOWN ONLY	ELD1A ELDOLED 1% 0-10V LOGARITHMIC UNV†							
		S835 80 CRI, 3500K, STANDARD DOWN ONLY	HL2W LUTRON HI-LUME 1% 2 WIRE/PWM*							
		S927 90 CRI, 2700K, STANDARD DOWN ONLY	HLECO LUTRON HI-LUME 1% ECOSYSTEM FADE-TO-BLACK UNV†							
		S930 90 CRI, 3000K, STANDARD DOWN ONLY								
		S935 90 CRI, 3500K, STANDARD DOWN ONLY								
		S9WD 90 CRI, WARM DIM 3000-2000K, STANDARD DOWN ONLY								
		RLS1	L					M	I	

*HL2W - TWO WIRE LOW-VOLTAGE ELECTRONIC DIMMING, 120 VOLT ONLY. †UNV = 120V/277V INPUT VOLTAGE.

PROJECT INFO

FIXTURE TYPE & QUANTITY	JOB NAME & INFO	NOTES

ELEMENT
by Tech Lighting®

GENERATION BRANDS
7400 Linder Avenue, Skokie, Illinois 60077
T 847.410.4400 F 847.410.4500

