

## Merge Gimbal Spot Head, Drop Down Spot Head, and FreeJack Adaptor

1.0

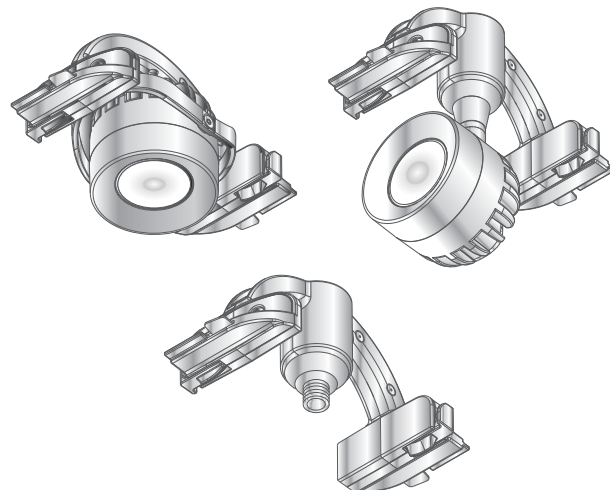
**ELEMENT**  
a brand of TECH LIGHTING™

## GENERAL PRODUCT INFORMATION:

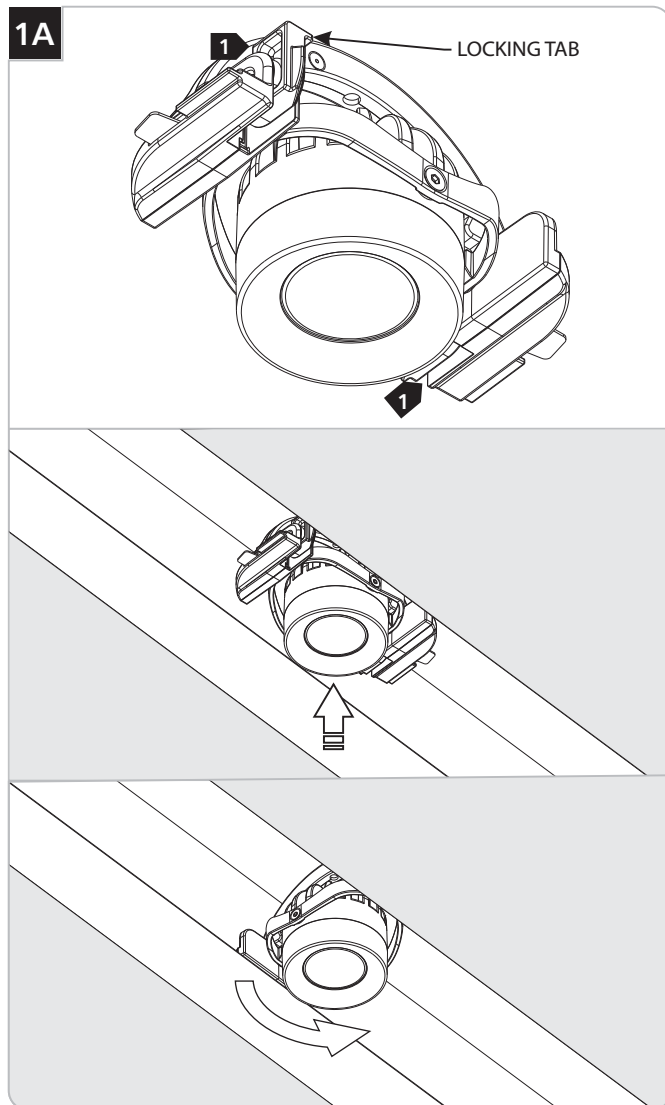
This product is suitable for dry locations.

Maximum loading of the low-voltage busbar is 240W (20 AMPS).

Maximum one spot per foot of linear panel.

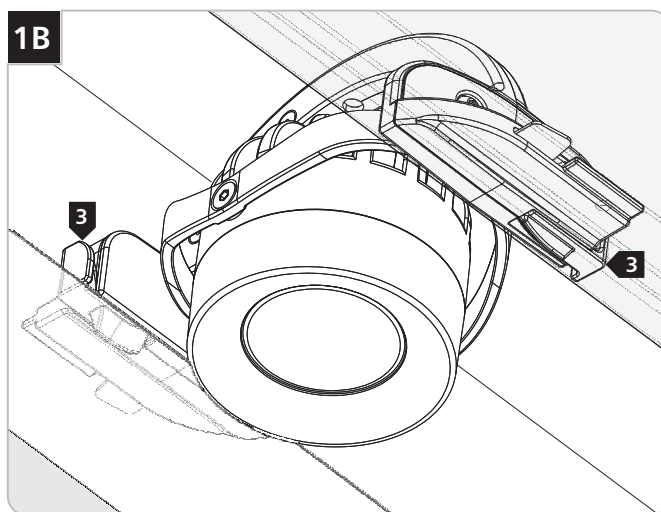


## Install Modules



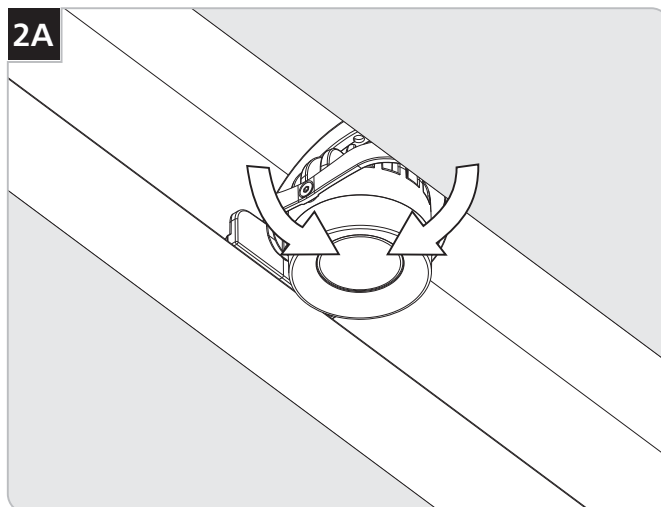
**1** Ensure that the locking tabs are in the upward position.

**2** Install the modules into the fixture channel at the desired location and rotate them 90° into place.



**3** Lock the modules into place by rotating locking tabs downward.

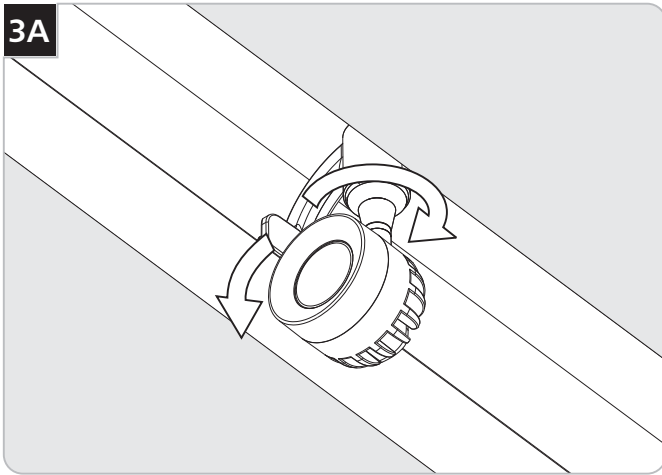
## Adjust the Gimbal Spot Head



**3** Aim the modules to the desired location by tilting it on either axis.

## Adjust the Drop Down Spot Head

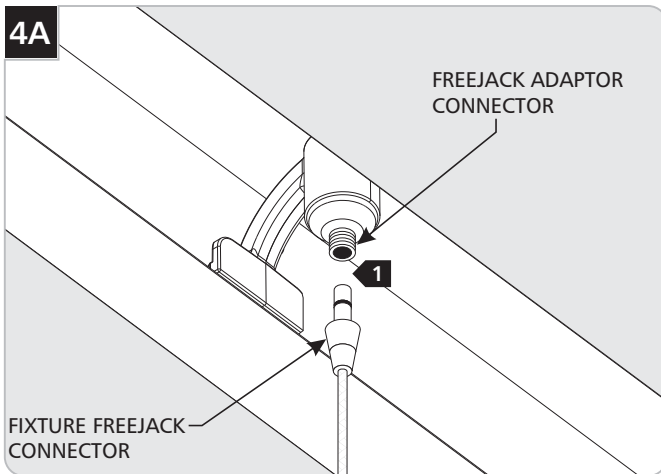
3A



- 1 Tilt and/or rotate the spot head to the desired location.

## Install FreeJack Fixture

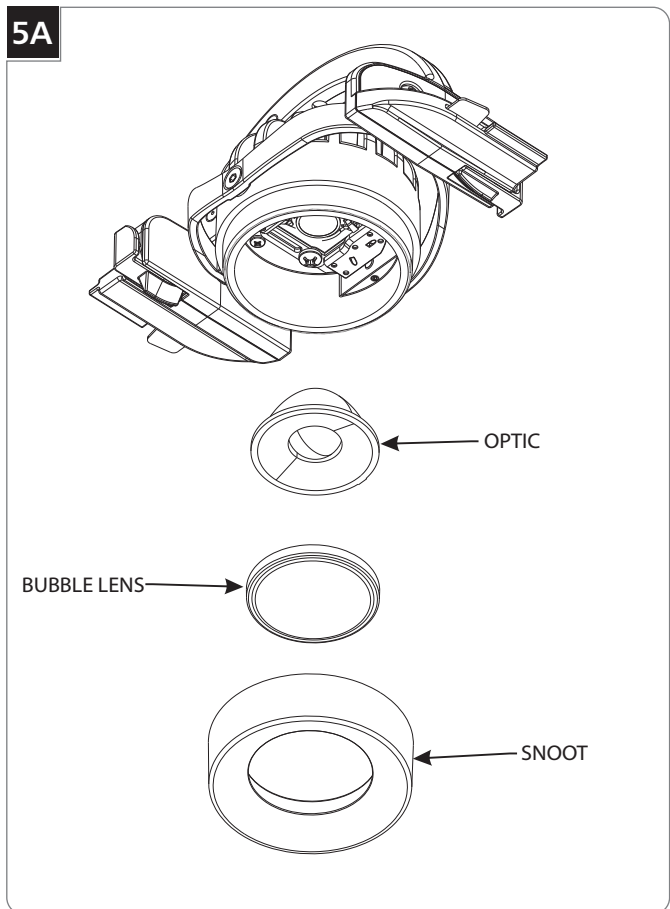
4A



- 1 Screw the Fixture FreeJack male connector into the FreeJack female connector.

## Replace/Install Optics and Lenses

5A



- 1 Unscrew and remove the snoot.
- 2 Remove the optic.
- 3 If installing an optional lens, discard the Bubble Lens and rest the optional lens (maximum two) inside the snoot.
- 4 Install the optic (replacement or existing) inside the snoot.
- 5 Screw the snoot back on.

**SAVE THESE INSTRUCTIONS!**

**ELEMENT**  
a brand of **TECH LIGHTING**

7400 Linder Ave.  
Skokie, IL 60077  
847.410.4400

**[www.element-lighting.com](http://www.element-lighting.com)**

© 2015 Tech Lighting, L.L.C. All rights reserved. The "Element" graphic is a registered trademark of Element. Element reserves the right to change specifications for product improvements without notification.